

It's Worth a Shot

Updates About the
COVID-19 Vaccine Mandate

January 26, 2022



Housekeeping Items

- Add your webinar topics and clinician ideas or needs into chat!
- We will meet every Wednesday through April 13, 2022!

Last Week's Questions and Answers



Q. Will there be different requirements for existing staff versus new staff?

A. No. Staff at all health care facilities included within the regulation must have received, at a minimum, the first dose of a two-dose COVID-19 vaccine or a one-dose COVID-19 vaccine by the regulatory deadline, **or prior to providing any care, treatment, or other services for the facility and/or its patients.**

[CMS Omnibus COVID-19 Health Care Staff Vaccination Requirements FAQ \(PDF\) \(1/21/22\) UPDATED](#)

Last Week's Questions and Answers



Q. How does Centers for Medicare & Medicaid Services (CMS) define “fully vaccinated” for the purposes of this requirement?

A. For purposes of this regulation, CMS currently considers staff fully vaccinated if it has been two or more weeks since they completed a primary vaccination series for COVID-19. However, staff who completed the primary series for the vaccine received by the Phase 2 implementation date are considered to have met these requirements, even if they have not yet completed the 14-day waiting period required for full vaccination.

Vaccine Storage: Moderna

The Moderna COVID-19 Vaccine is supplied in two multiple-dose vial presentations: 5.5 mL and 7.5 mL. Primary series doses of 0.5 mL and booster doses of 0.25 mL may be extracted from either vial presentation, preferentially using low dead-volume syringes and/or needles.

Frozen Storage

Can be stored frozen until expiration date*

-50° to -15°C (-58° to 5°F)

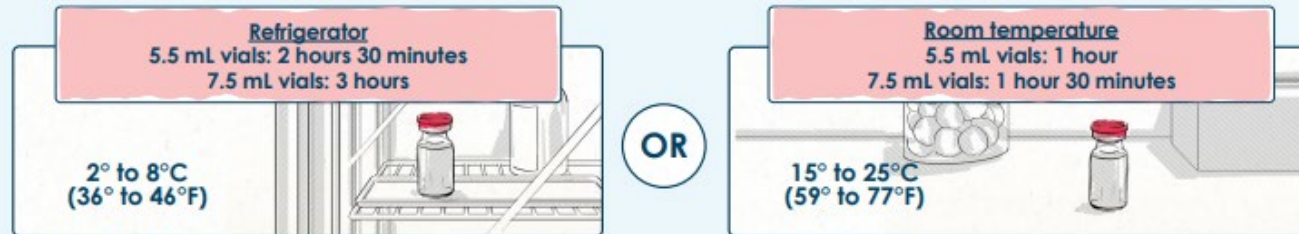
Do not store on dry ice or below -50°C (-58°F).
Store in the original carton to protect from light.

*Confirm vaccine expiration date by looking up the lot number at [modernatx.com/covid19vaccine-eua](https://www.modernatx.com/covid19vaccine-eua)



Thaw Each Vial Before Use

Vial images for illustrative purposes only






Thawed Shelf Life



NEVER refreeze thawed vaccine

The maximum number of times a vial stopper can be punctured is 20.

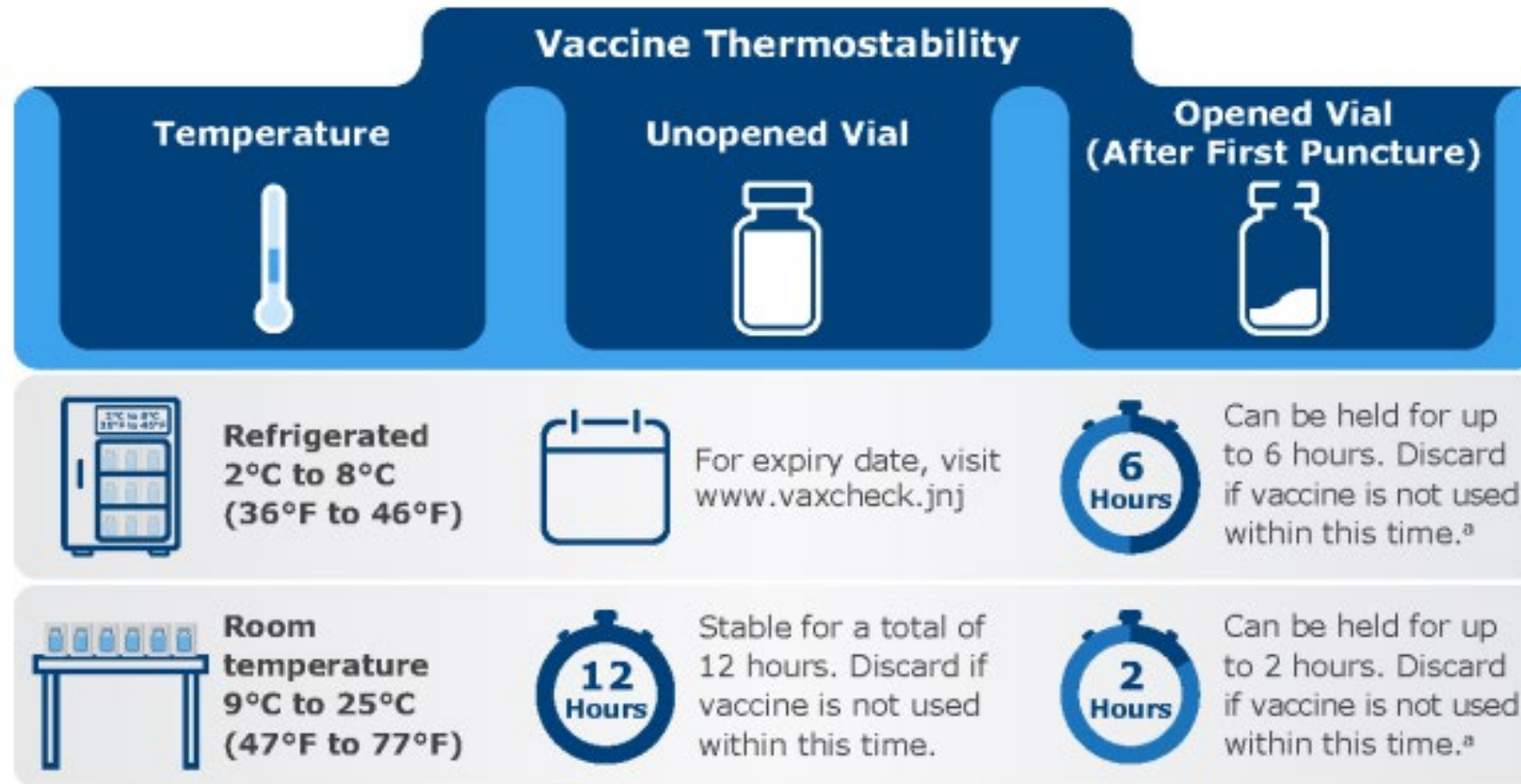
Vaccine Storage: Pfizer

Description	Dilute Before Use	Do Not Dilute	Dilute Before Use
Age Group	12 years and older ^{1,2}	12 years and older ³	5 through 11 years ⁴ ("Age 5y to <12y" on vial label)
Vial Cap Color	Purple 	Gray 	Orange 
Dose	30 mcg	30 mcg	10 mcg
Dose Volume	0.3 mL	0.3 mL	0.2 mL
Amount of Diluent Needed per Vial*	1.8 mL	NO DILUTION	1.3 mL
Doses per Vial	6 doses per vial (after dilution)	6 doses per vial	10 doses per vial (after dilution)

Storage Conditions

Ultra-Low-Temperature (ULT) Freezer [-90°C to -60°C (-130°F to -76°F)]	9 months†	6 months‡	6 months‡
Freezer [-25°C to -15°C (-13°F to 5°F)]	2 weeks	DO NOT STORE	DO NOT STORE
Refrigerator [2°C to 8°C (35°F to 46°F)]	1 month	10 weeks	10 weeks
Room Temperature [8°C to 25°C (46°F to 77°F)]	2 hours prior to dilution (including any thaw time)	12 hours prior to first puncture (including any thaw time)	12 hours prior to dilution (including any thaw time)
After First Puncture [2°C to 25°C (35°F to 77°F)]	Discard after 6 hours	Discard after 12 hours	Discard after 12 hours

Vaccine Storage: Johnson & Johnson



Protect from light. ^aMaximum hold times for these 2 temperature ranges are not cumulative (i.e., The vaccine cannot be held at room temperature for 2 hours and then held refrigerated for another 6 hours).

Source: www.janssenmd.com/printpdf/janssen-covid19-vaccine/product-properties/drug-storage-stability/janssen-covid19-vaccine-dosingadministration-storagehandling-vials-shipped-refrigerated?pdf-version=

Resources

You Call the Shots, Storage and Handling 2022: Centers for Disease Control and Prevention (CDC) training

- <https://www2a.cdc.gov/nip/isd/ycts/mod1/courses/sh/ce.asp>

Quick Reference Guide for Healthcare Professionals

- <https://www.cdc.gov/vaccines/covid-19/downloads/covid19-vaccine-quick-reference-guide-2pages.pdf>

Vaccine Storage and Handling Toolkit

- <https://www.cdc.gov/vaccines/hcp/admin/storage/toolkit/index.html>

Immunization Action Coalition Storage Resources

- <https://www.immunize.org/clinic/storage-handling.asp>

CDC COVID vaccine provider program

- <https://www.cdc.gov/vaccines/covid-19/vaccination-provider-support.html>

Questions?



Reporting COVID-19 Vaccination Data into National Healthcare Safety Network (NHSN)



Reporting Cumulative Data



+ Cumulative versus Incident Vaccination

- Cumulative vaccination data are the total number of individuals who have ever received COVID-19 vaccine since it became available in December 2020
- Incident vaccination data are the number of new individuals who received COVID-19 vaccine in a specific week
- *Incident vaccine data are not used for reporting COVID-19 vaccination data in NHSN*

Reporting Cumulative Data



+ Cumulative Vaccination Data: Example

- Week 1: Five individuals receive dose one of Moderna COVID-19 vaccine
 - The cumulative number of individuals who received dose one of Moderna COVID-19 vaccine = 5
- Week 2: Five more individuals receive dose one of Moderna COVID-19 vaccine
 - The cumulative number of individuals receiving dose 1 of Moderna COVID-19 vaccine = 10
- Explanation:
 - Five individuals vaccinated in week 1 +
Five individuals vaccinated in week 2 = 10

Five Key Questions for Weekly COVID-19 Vaccination Modules



+ Number of current residents and eligible health care personnel (HCP)?

- All residents that occupied a bed in the facility for at least one day (24 hours) during the reporting week
- Number of HCP-*eligible* to have worked at the facility for at least one day during the reporting week
- Employee and non-employee
- All staff categories are required

Five Key Questions for Weekly COVID-19 Vaccination Modules



- +** **Cumulative number of the individuals from question 1 who have ever been vaccinated with COVID-19 vaccine.**
 - Select vaccine
 - Receive either dose 1 or both dose 1 and 2
- +** **Cumulative number of these individuals from question 1 with other conditions?**
 - Contraindications, refusals, unknown
 - *All individuals included in question 1 must be accounted for in questions 2 and 3*

Five Key Questions for Weekly COVID-19 Vaccination Modules



+ Cumulative number of individuals who have received a complete COVID-19 vaccine series and who are eligible to receive an additional dose or booster?

- Received an initial complete COVID-19 Vaccine series (question 2)
- Additional dose or booster
- Refer to the CDC considerations for eligibility: <https://www.cdc.gov/vaccines/covid-19/clinical-considerations/covid-19-vaccines-us.html>

Five Key Questions for Weekly COVID-19 Vaccination Modules



+ Number of individuals in question four who have received an additional vaccine dose or booster since August 2021?

***Reminder – Required fields are marked with a red asterisk and a red box:**

- LTCF Residents: <https://www.cdc.gov/nhsn/forms/instr/57.218-toi-508.pdf>
- LTCF HCP: <https://www.cdc.gov/nhsn/forms/instr/57.219-toi-508.pdf>
- Non-LTCF HCP: <https://www.cdc.gov/nhsn/forms/instr/57.220-toi-508.pdf>

Ways to Enter COVID-19 Vaccination Data into NHSN



+ **Manual Entry**

- Vaccination summary forms for resident and HCP

+ **CSV Data Import**

- Download and save CSV sheets to computer
- Direct upload to NHSN
- Can be found on the Vaccination Summary Page

Questions



- 1. Is there a place to report Staff/Residents that have religious reasons for not getting a vaccination?**
 - Non-medical exemptions such as religious views are to be entered into the 'Offered but Declined' section.
- 2. Is there any means to upload these tracking forms to NHSN instead of doing the tracking on these sheets and then having to reenter the data manually?**
 - The CSV template offers this option.
- 3. Does it matter if a resident received a vaccine somewhere other than our nursing home, or if they received each of their vaccinations at different locations?**
 - It does not matter where they received their vaccination(s).

Resources

NHSN COVID-19 Module:

- <https://www.cdc.gov/nhsn/ltc/covid19/index.html>

NHSN COVID-19 Vaccination Information:

- <https://www.cdc.gov/nhsn/ltc/weekly-covid-vac/index.html>

NHSN COVID Vaccination FAQs:

- <https://www.cdc.gov/nhsn/pdfs/ltc/covidvax/c19vax-faq-ltc-508.pdf>

Thank you!

Join us next week on
Wednesday, February 2, 2022.

This material was prepared by Mountain-Pacific Quality Health, a Medicare Quality Innovation Network-Quality Improvement Organization (QIN-QIO), under contract with the Centers for Medicare & Medicaid Services (CMS), an agency of the U.S. Department of Health and Human Services (HHS). Views expressed in this material do not necessarily reflect the official views or policy of CMS or HHS, and any reference to a specific product or entity herein does not constitute endorsement of that product or entity by CMS or HHS. 12SOW-MPQHF-AS-NH-01/22-101